

What is STORMWATER

OR URBAN RUNOFF?

WHY IS IT A PROBLEM?

Anything that goes down the storm drains flows directly into local waterways.

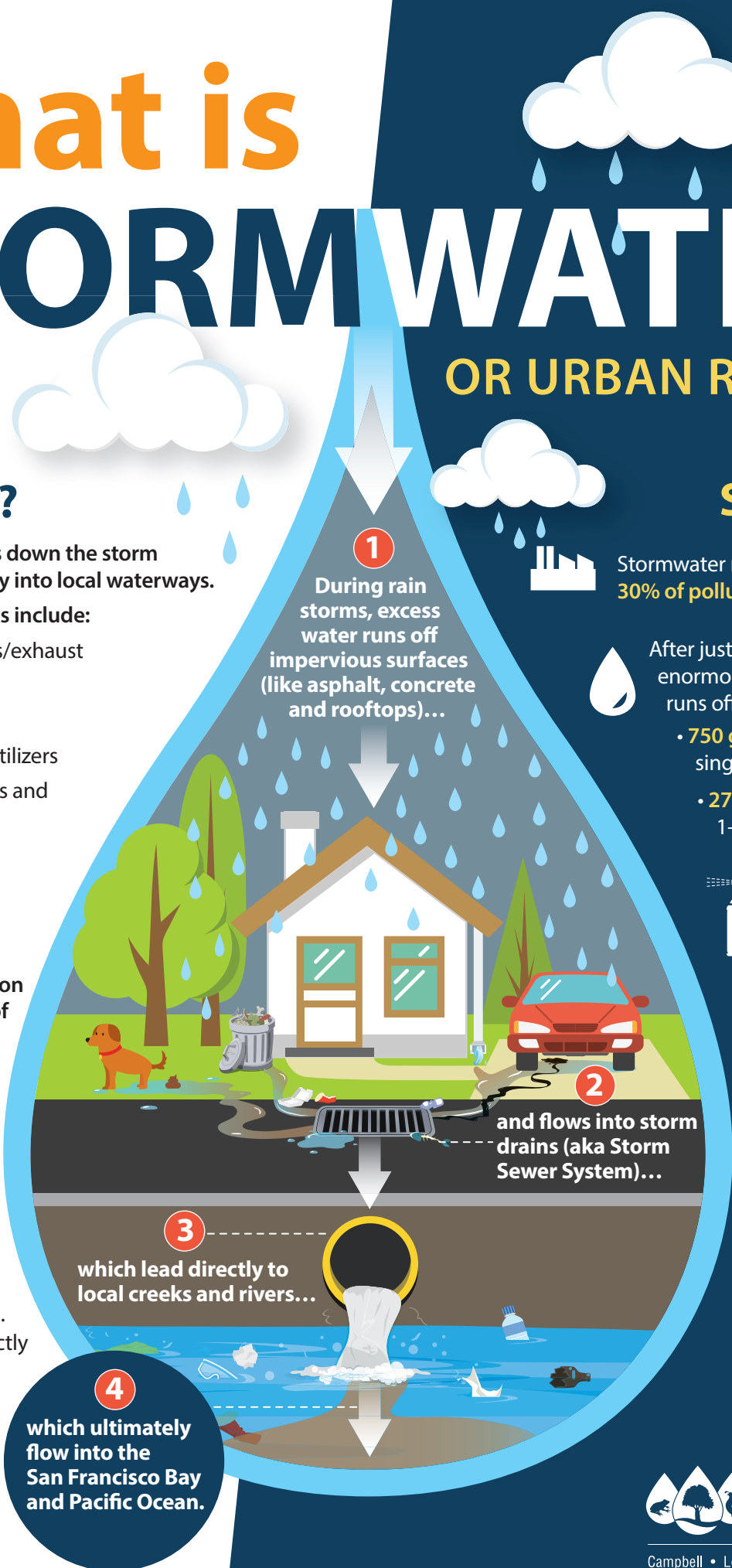
Common pollutants include:

- Automotive fluids/exhaust
- Sediment/dirt
- Illegal dumping
- Pesticides and fertilizers
- Cleaning products and detergents
- Animal waste
- Trash and litter
- Mercury, PCBs, and Copper

Stormwater pollution affects the health of plants, fish, other wildlife—and people too!



In the West Valley, stormwater runoff never goes to the Sanitary Sewer System. It flows untreated directly into local waterways.



STORMWATER STATISTICS



Stormwater runoff accounts for about **30% of pollutants** in our waters.



After just one inch of rain, an enormous amount of stormwater runs off into storm drains:

- **750 gallons** from a typical single family home
- **27,000 gallons** from a 1-acre parking lot



After a rain storm, between **5 and 10 different types of pesticides** can be detected in local creeks.



Every year, **7 trillion tiny pieces of plastic** flow into San Francisco Bay from stormwater. (That's about 1 million pieces each for every man, woman and child in the Bay Area!)

4 which ultimately flow into the San Francisco Bay and Pacific Ocean.



West Valley
Clean Water Authority

How is the West Valley Clean Water Authority MAKING A DIFFERENCE?

All municipalities must comply with a National Pollutant Discharge Elimination System (NPDES) permit to discharge stormwater to the storm sewer system. The permit controls water pollution by regulating sources that discharge pollutants into waterways.

The West Valley Clean Water Program Authority provides facilitation of collaborative stormwater management efforts on behalf of the West Valley communities of **Campbell, Los Gatos, Monte Sereno, and Saratoga** to comply with municipal NPDES requirements. The NPDES Permit requires municipalities to develop and implement plans to control pollution in stormwater runoff.



Focused programs include:



Municipal Operations

Street sweeping, road maintenance, and corporation yard activities.



New Development and Redevelopment

Implementing green stormwater infrastructure features into private and public projects. These features allow stormwater runoff to soak into the ground and be filtered by soil.



Industrial/Commercial Site Controls

Educating business owners and inspecting over 350 industrial and commercial sites a year or annually.



Illicit Discharge Controls

Maintaining a system for receiving complaints of illegal discharges to storm drains; responding and investigating reports.



Construction Site Controls

Educating property owners and developers and inspecting construction sites to ensure they are implementing practices to prevent stormwater pollution.



Public Education/Outreach

Educating and engaging the community through social media, public events, and classroom presentations.



Water Quality Monitoring

Assessing local creek health and identifying sources of impacts.



Trash Mitigation

Installing trash capture devices in storm drains, conducting creek and homelessness camp cleanups, and banning single-use products, like plastic bags and styrofoam.



Reduction of Pesticides/Fertilizers/Herbicides

Managing municipal facilities and parks with least toxic chemicals and educating the community on alternatives to pesticides for controlling common home and garden pests.



Pollutants of Concern (POC) Management

Controlling discharges of mercury (thermometers and fluorescent light bulbs), PCBs (demolition of old buildings), and copper (ornamental features and pool/spa discharge).

Report a Spill:

408-354-5385 • [CleanCreeks.org](https://www.CleanCreeks.org)



Campbell • Los Gatos • Monte Sereno • Saratoga



@cleancreeks